

Dr. Daniel Fuß

Das Beziehungs- und Familienpanel pairfam: Konzept, Design und Instrumente

5. soeb-Werkstattgespräch

“Arbeit am Bericht: Konzepte, Daten, Methoden”

(16./17. September 2010)



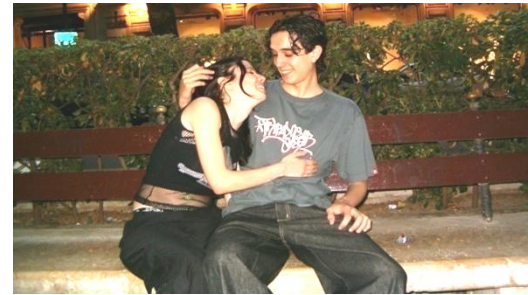
I. Conceptual Framework

pairfam as long-term project

- since May 2010 pairfam is funded within the long-term program of the **German Research Foundation (DFG)**
- pairfam is planned to run for **14 years with annually conducted waves** (including the first two waves from the DFG priority program 1161)
- application for approval to continue funding is required every second year
- fieldwork by TNS Infratest, Munich

research foci

- **intimate relationships:** founding, establishing, shaping
- **parenthood decision-making:** timing, spacing, stopping of childbearing
- **intergenerational relationships:** quality of relationships, material and immaterial transfers
- **parenting and child development:** goals and practices of raising children, childcare, parent-child relationship
- **social embeddedness:** contextual influences on intimate relationships and family dynamics



pairfam team

Methods and Socio-Demography (Mannheim):

Prof. Dr. Josef Brüderl, Volker Ludwig, Jasmin Passet, Ulrich Krieger, Nina Schumann, Philipp Schütze

Intergenerational Relations (Chemnitz):

Prof. Dr. Bernhard Nauck, Dr. Daniela Klaus

Timing, Spacing and Stopping of Fertility (Bremen):

Prof. Dr. Johannes Huinink, Dr. Petra Buhr

Partnership, Parenting and Child Development (Munich):

Prof. Dr. Sabine Walper, Markus Schaer, Franziska Schmahl, Carolin Thönnissen, Dr. Eva-Verena Wendt

Survey Management and Administrative Coordination

Klaus Pforr (Mannheim), Dr. habil. Anja Steinbach (Chemnitz)

User Support and Public Relations

Dr. Daniel Fuß (Chemnitz), Margareta Lutschkowski (Bremen)

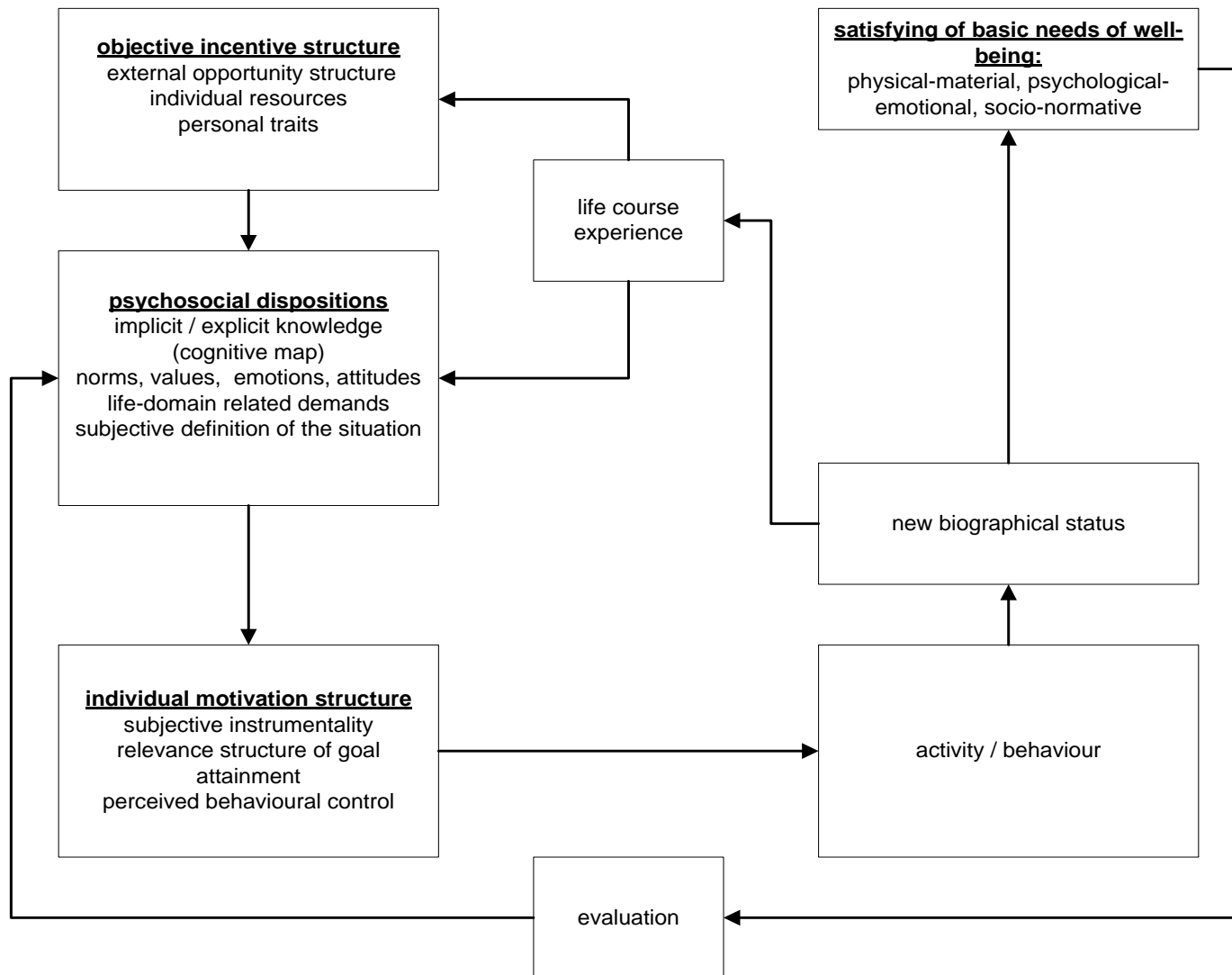
cooperation

- with the Max Planck Institute for Demographic Research, Rostock
- the project **Demographic Differences in Life-Course Dynamics in Eastern and Western Germany (DemoDiff)** supplements pairfam with an oversample of Eastern German respondents (cohort 2 and 3)

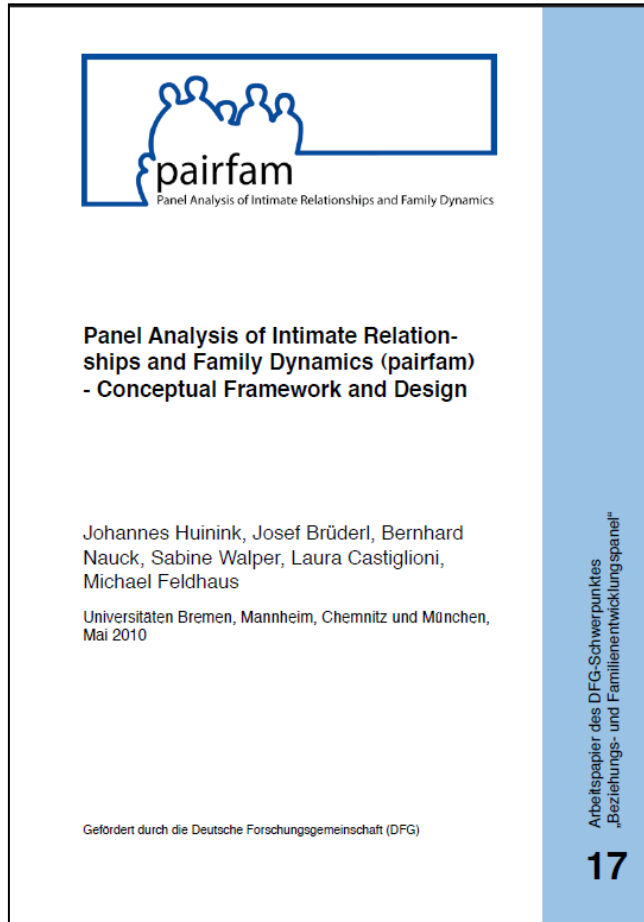
→ Jun. Prof. Dr. Michaela Kreyenfeld

theoretical background

- Rational Choice (bounded rationality)
- Life Course Approach



pairfam framework paper

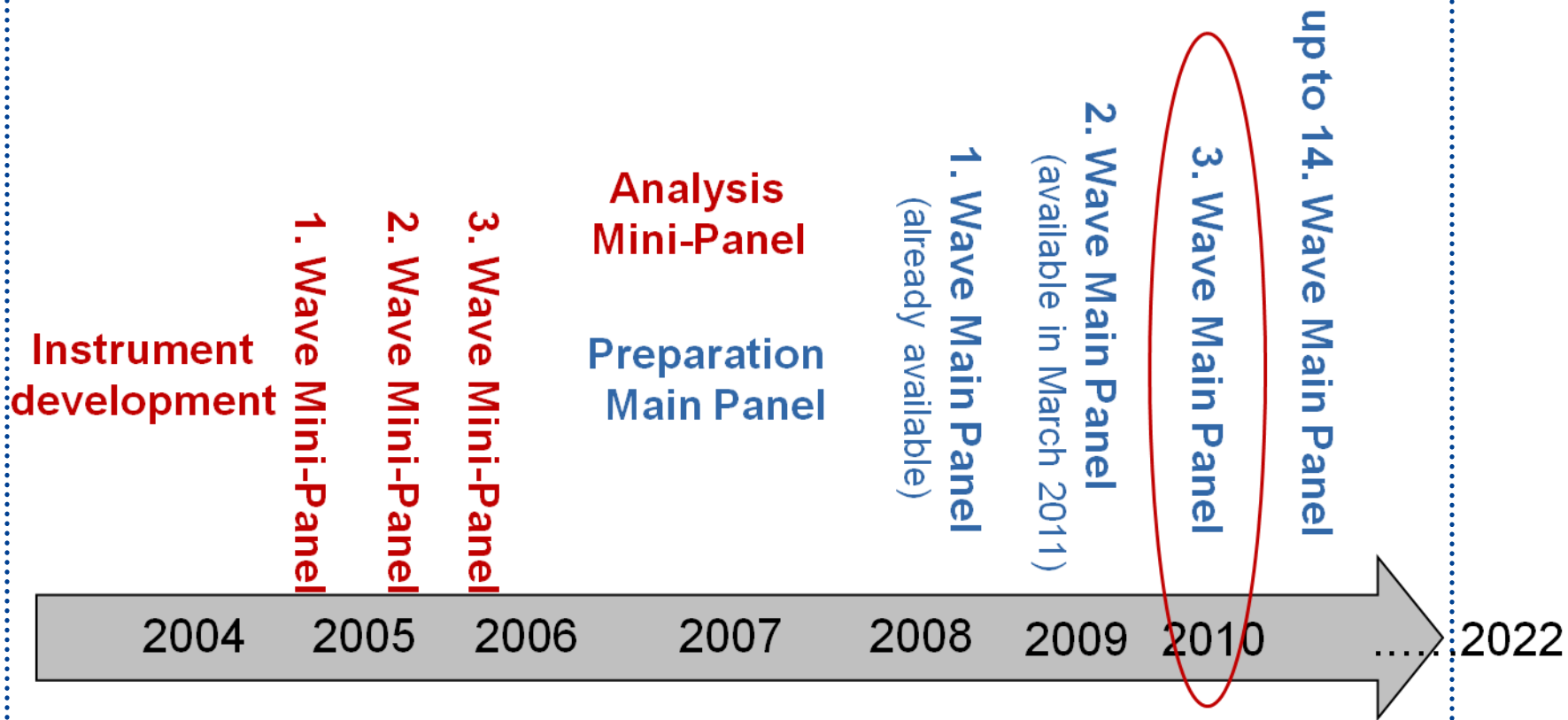


- framework paper by Huinink et al. (2010)
- comprehensive description of the conceptual basis and the design of pairfam
- addresses all those who are interested in working with the pairfam data
- reference for all publications that utilize pairfam data

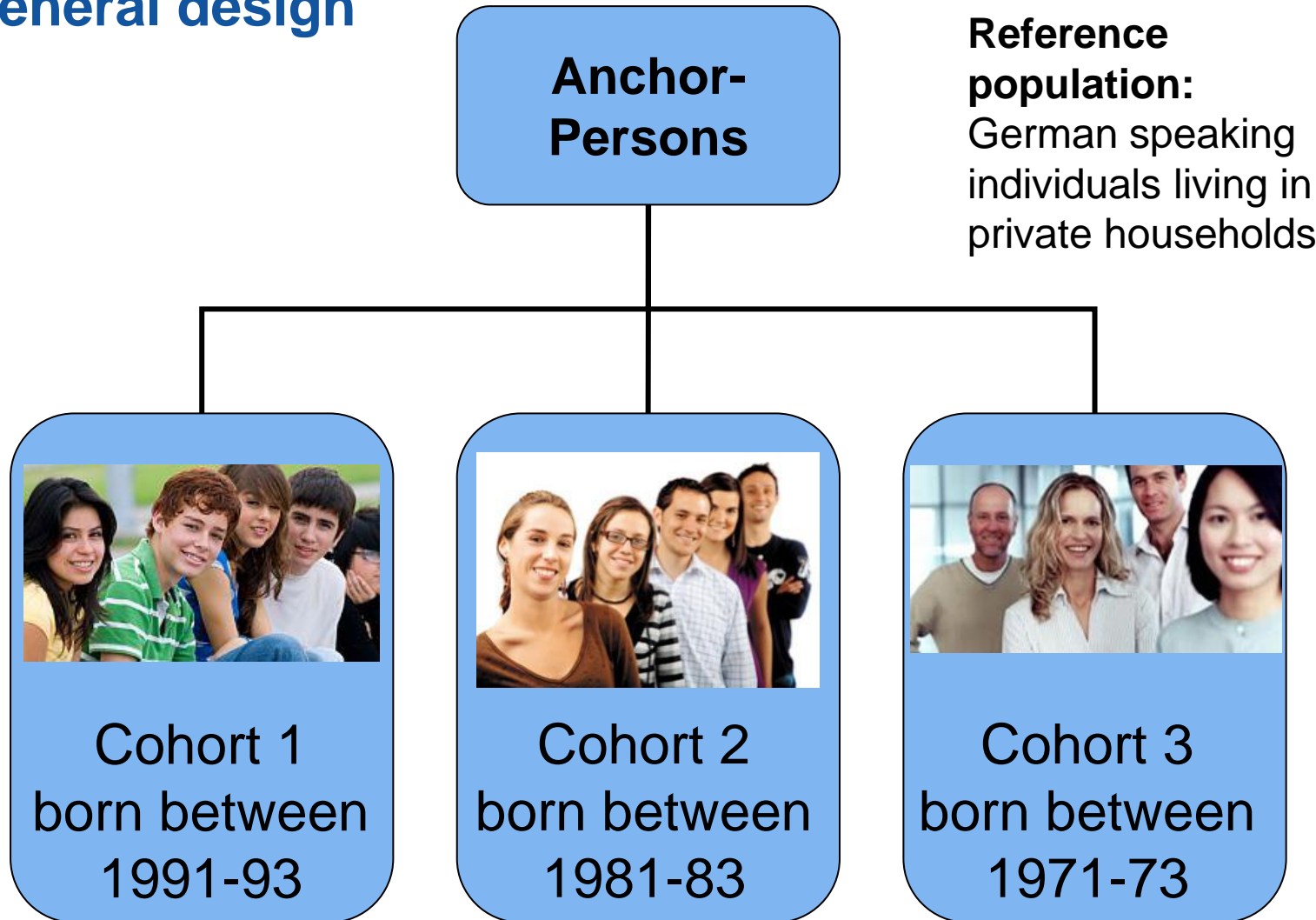


II. Design and Contents

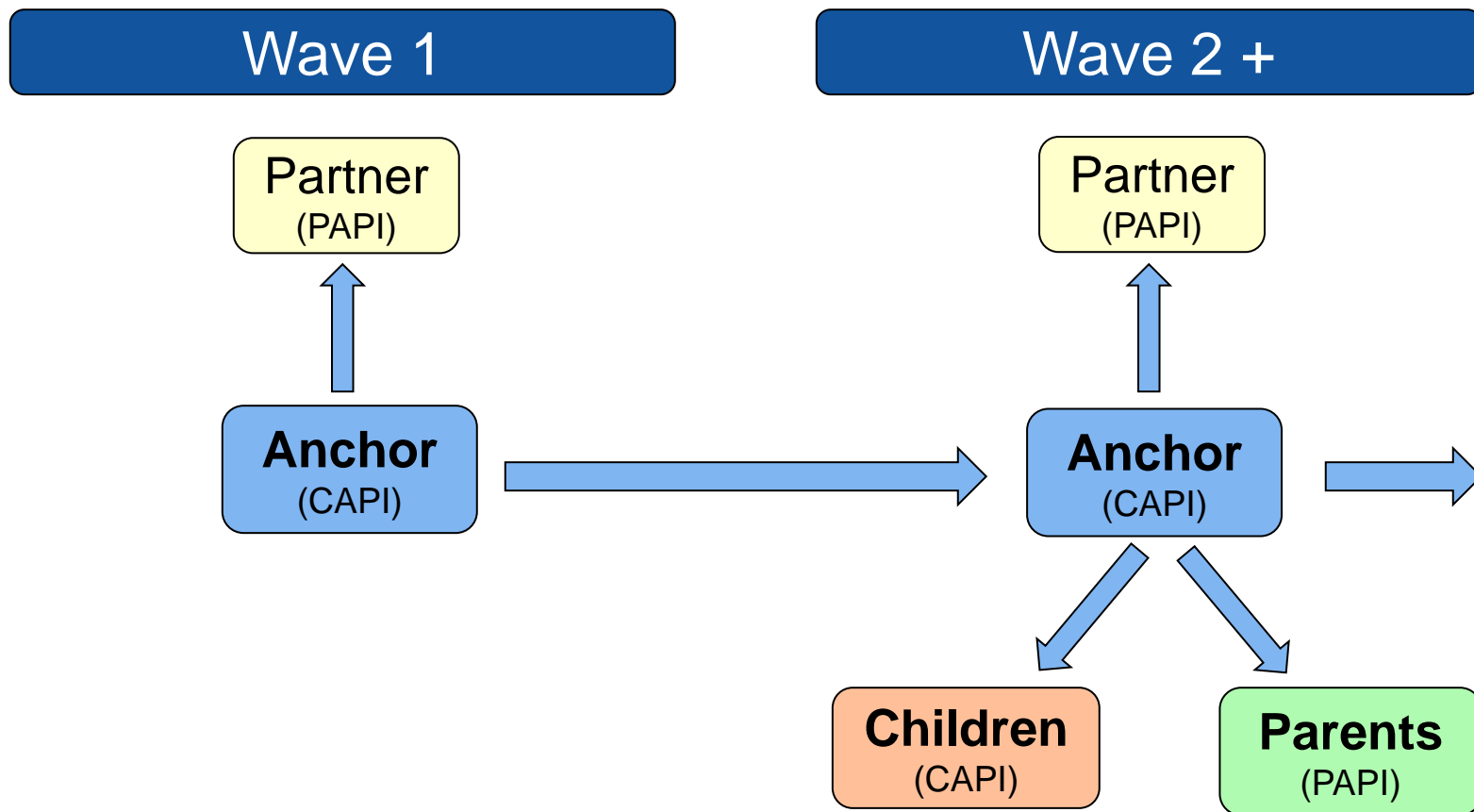
time table of the research program



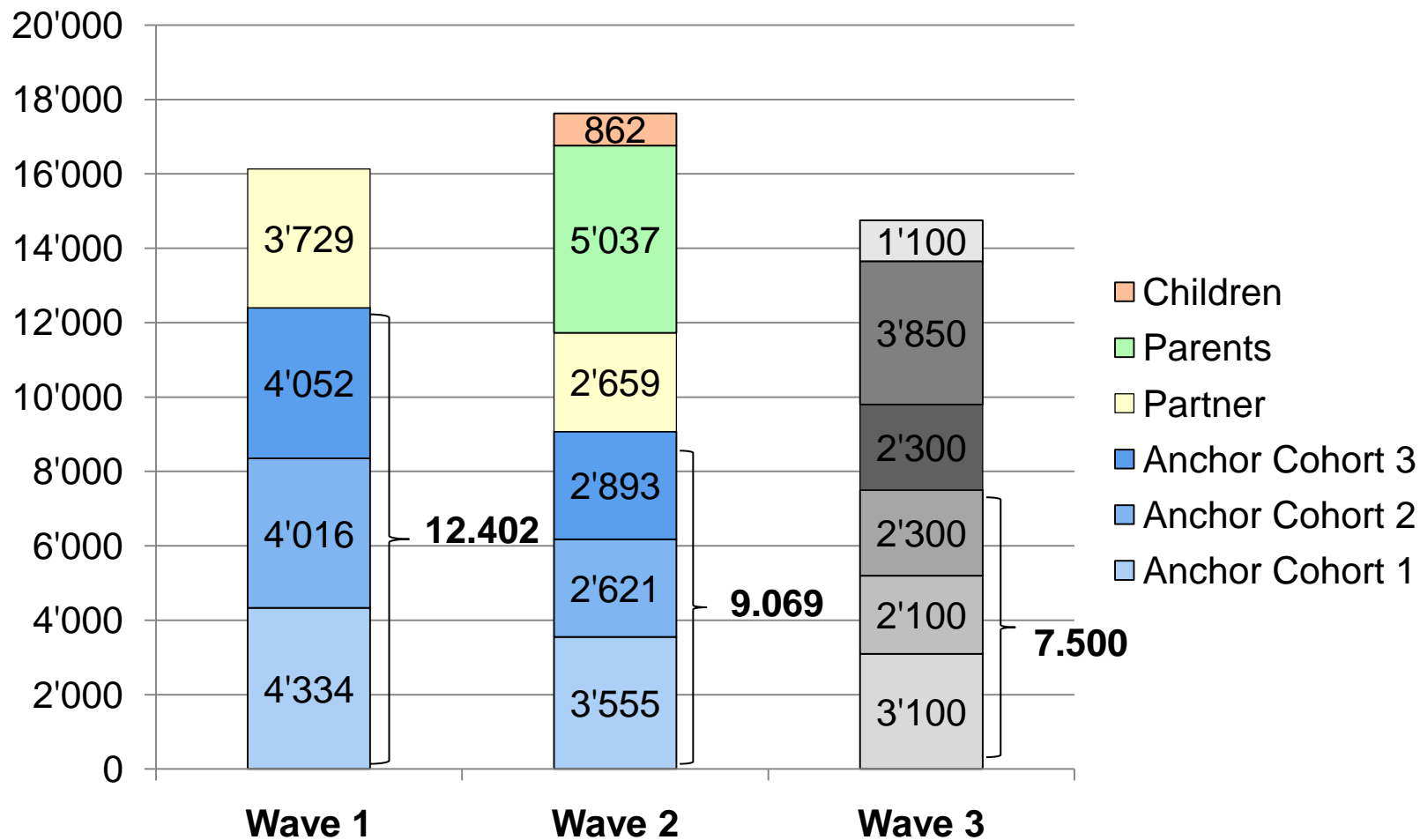
general design



multi-actor design



longitudinal design



contents of the anchor interviews

Wave 1

retrospective modules

partnership history

fertility history

repeated core modules

current partnership

fertility

intergen. relations

demography

personality, values

rotated in-depth modules

current partnership

Wave 2

retrospective modules

childhood history

repeated core modules

between wave LHC

current partnership

fertility

intergen. relations

parenting

demography

personality, values

rotated in-depth modules

intergen. relations

fertility

network module

Wave 3

retrospective modules

activity status

mobility

repeated core modules

between wave LHC

current partnership

fertility

intergen. relations

parenting

demography

personality, values

rotated in-depth modules

current partnership

parenting

Wave 4

special module

work-life-balance

repeated core modules

between wave LHC

current partnership

fertility

intergen. relations

parenting

demography

personality, values

rotated in-depth modules

intergen. relations

fertility

network module

contents of the multi-actor interviews in wave 1

Anchor (n=12.402)

retrospective modules

partnership history

fertility history

repeated core modules

current partnership

fertility

intergen. relations

demography

personality, values

rotated in-depth modules

current partnership

Partner (n=3.743)

repeated core modules

current partnership

fertility

intergen. relations

demography

personality, values

rotated in-depth modules

current partnership

contents of the multi-actor interviews in wave 2



Anchor (n=9.069)

retrospective modules

childhood history

repeated core modules

between waves LHC

current partnership

fertility

intergen. relations

parenting

demography

personality, values

rotated in-depth modules

fertility

intergen. relations

network module

parenting (n=726)

child-specific module

parenting

Partner (n=2.659)

repeated core modules

current partnership

fertility

intergen. relations

demography

personality

rotated in-depth modules

fertility

intergen. relations

parenting (n=447)

child-specific module

parenting

Children (n=862)

repeated core modules

school/education

intergen. relations

parenting

demography

personality

rotated in-depth modules

intergen. relations

Parents (n=5.037)

repeated core modules

current partnership

intergen. relations

demography

rotated in-depth modules

intergen. relations



III. Instruments

socio-economic indicators

- individual earnings & change (wave 2 onwards)
- household income & change (wave 2 onwards)
- assets & change
- poverty, extend & duration
- transfer payments & duration
- unemployment & duration
- fixed-term work contract

education indicators

- school type, school leaving certificate / graduation, years of schooling
- job training, type of occupational training / academic studies
- time interval and activities between leaving school and first occupational training / academic studies
- type of transition / pathways into job training
- drop out occupational training / academic studies
- further education, time in further education, degree achieved in further education

employment indicators

- duration between end of job training and first employment
- type of first job (fixed term etc.), earnings in first job
- current employment status, duration of current employment status
- weekly hours employed, fixed work contract
- distance to work place
- quality of work: time pressure, work load, physical strain, routine vs. stimulation, satisfaction with payment, occupational climate

indicators of intergenerational relationships

- structure & quality of relationships with parents
 - coresidence, frequency of contact
 - financial support received
 - instrumental support received
 - emotional support received
 - satisfaction
 - closeness
 - parental strictness & conflict
 - negativity / rejection
- quality of interparental relationship (parents questionnaire)
- age at home-leaving

partnership indicators

- age at first romantic involvement, first cohabitation, first marriage
- current partnership status
- duration of current partnership status
- cohabitation
- marital status
- quality of relationship: instrumental support received, emotional support received, satisfaction, closeness, conflict, negativity / rejection
- stability of relationship

family-formation indicators

- number of children desired (ideal)
- expected number of children (realistic prediction)
- current number of children
- miscarriage / abortion
- age, family type and employment status at transition to parenthood (marital status; with/out partner [in household], cohabitation with parents...)
- employment status of the partner at transition to parenthood (in job training, employed, unemployed, not employed for other reasons...)
- age at birth of further children (→ spacing of children)

health & well-being indicators

- general health status
- reduction in earnings capacity
- physical measures (height, weight)
- emotional strain
- depressiveness
- anger / aggressiveness
- anxiety
- self-esteem
- general Life satisfaction
- satisfaction with specific domains in life

IV.

Data Documentation and Distribution

data documentation

codebooks

- questionnaires with additional information on variable names and filter (available for anchor, partner, children, parents and parenting)

data manual

- explains the structure of the datasets
- provides a description of conducted data-editing procedures
- contains notes on generated variables, weighing factors, and the handling of biographical episode data

scales documentation

- authors, description of content, number of items, (in case) reasons for shortenings, answering format, filter, reference to alteri-questions
- item formulation (with reference to operationalization), introductory text, variable name, reliability (Cronbach's Alpha)

methods report from TNS Infratest (in German)

data access – scientific use file

- pairfam-data are provided for scientific analyses only
 - data distribution is organized by the pairfam user support
 - data access requires a signed user contract
 - opportunity for internal data distribution
 - data are available free of charge
- scientific use file available on CD-ROM
 - prepared data plus a comprehensive documentation
 - aggregation level: 16 state level and community size
- data use is bound to regulations of data protection

on-site use of pairfam data

- contextual data for multi-level analyses are available
 - pairfam data can be used on-site at all four participating universities to conduct analyses with aggregated data
- **microm-data** as locally-based indicators include
 - MOSAIC ethnic composition
 - MOSAIC housing characteristics, inhabitants, age structure, consumption typology, functionality
 - MOSAIC life phases
 - MOSAIC typology
 - MOSAIC socio-demographic composition
 - MOSAIC mobility
 - MOSAIC milieus, unemployment rate etc.

website

questionnaires/codebooks, working papers,
workshop and congress presentations,
data access documents etc.
can be found at

<http://www.pairfam.de>

pairfam user support

Dr. Daniel Fuss

Chemnitz University of Technology

Institute of Sociology

D-09107 Chemnitz

daniel.fuss@soziologie.tu-chemnitz.de